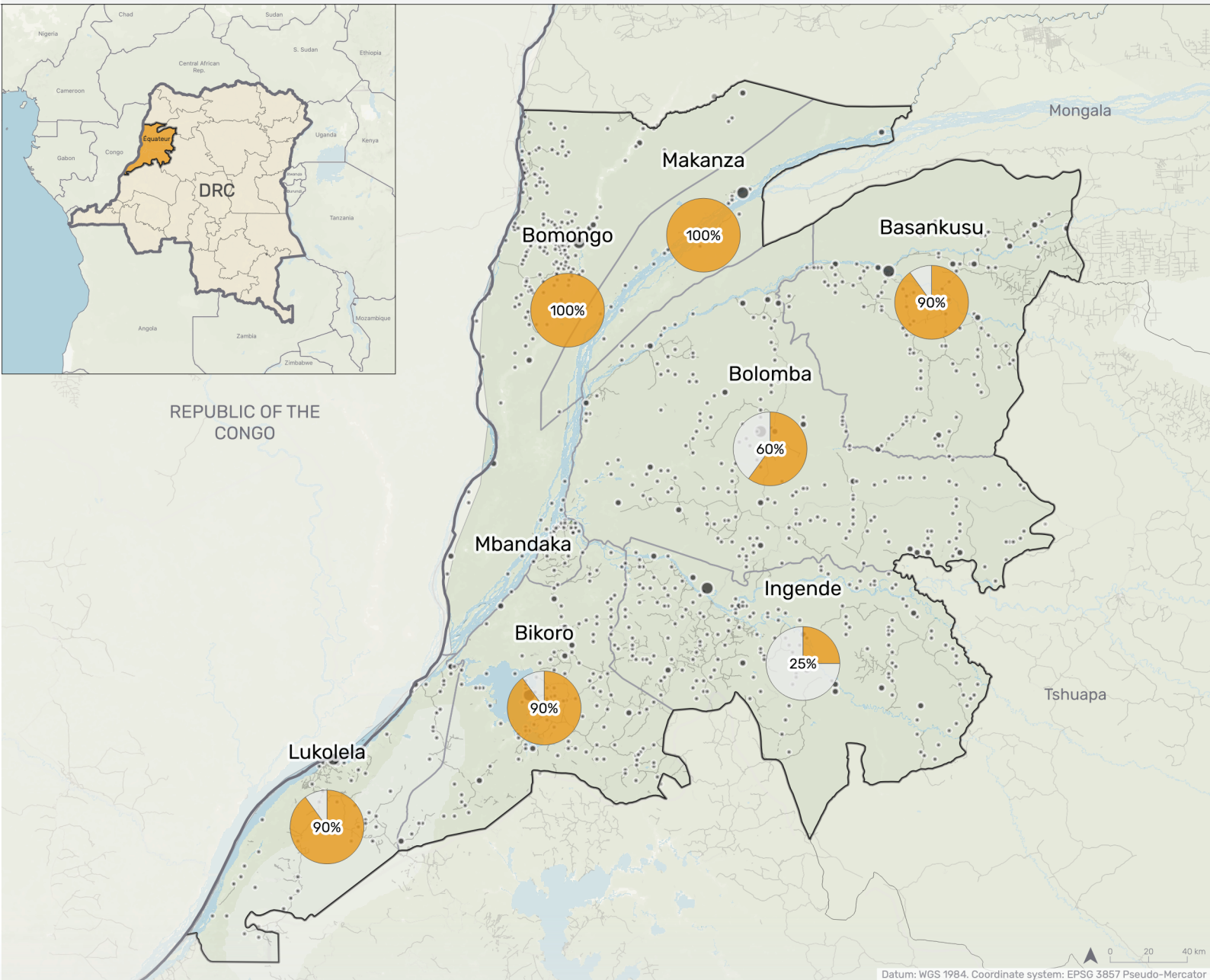


# Language map of Équateur province

Democratic Republic of Congo



Number of speakers of each language per territory  
0 500,000

• Small settlement • Medium settlement • Large settlement — Roads

Percentage of people who speak Lingala per territory

Basankusu	Bikoro	Bolomba	Bomongo	Ingende	Lukolela	Makanza
Lingala 90% 350,541 ppl.	Lingala 90% 302,915 ppl.	Ngombe 90% 422,780 ppl.	Lingala 100% 201,134 ppl.	Mongo 40% 108,466 ppl.	Lingala 90% 168,575 ppl.	Lingala 100% 127,924 ppl.
Mongo 75% 292,118 ppl.	Lontomba 45% 151,457 ppl.	Lingala 60% 281,854 ppl.	Makutu 50% 100,567 ppl.	Lothsua 35% 94,908 ppl.	Mpama 35% 65,557 ppl.	Libinza 30% 38,377 ppl.
Ngombe 30% 116,847 ppl.	Ekonda 40% 134,629 ppl.	Mongo 40% 187,902 ppl.	Lobala 30% 60,340 ppl.	Lingala 25% 67,792 ppl.	Banunu 30% 56,192 ppl.	Mabale 30% 38,377 ppl.
Ngando 10% 38,949 ppl.	Mongo 20% 67,314 ppl.	Eleku 30% 140,927 ppl.	Baloi 10% 20,113 ppl.			Balobo 25% 31,981 ppl.

\* No data available for the City of Mbandaka

